

Fastpath Risk Insights

Build custom visualizations and reports to surface access risk insights faster and accelerate decision-making

Fastpath customers often export data into external Business Intelligence (BI) and spreadsheet tools for executive and audit reporting – then spend hours each quarter rebuilding charts, merging datasets, and reformatting outputs. With different stakeholders needing different views, reporting becomes repeat manual work and slows down responses to stakeholder questions.

Fastpath Risk Insights gives Risk and Compliance teams the flexibility to create custom visualizations and reports tailored to their organization's preferences directly in the product dashboard, saving time spent exporting and rebuilding.

Benefits



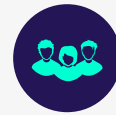
Quickly deliver stakeholder-ready reporting

Create executive updates, audit evidence, and operational views without exporting and rebuilding charts every cycle.



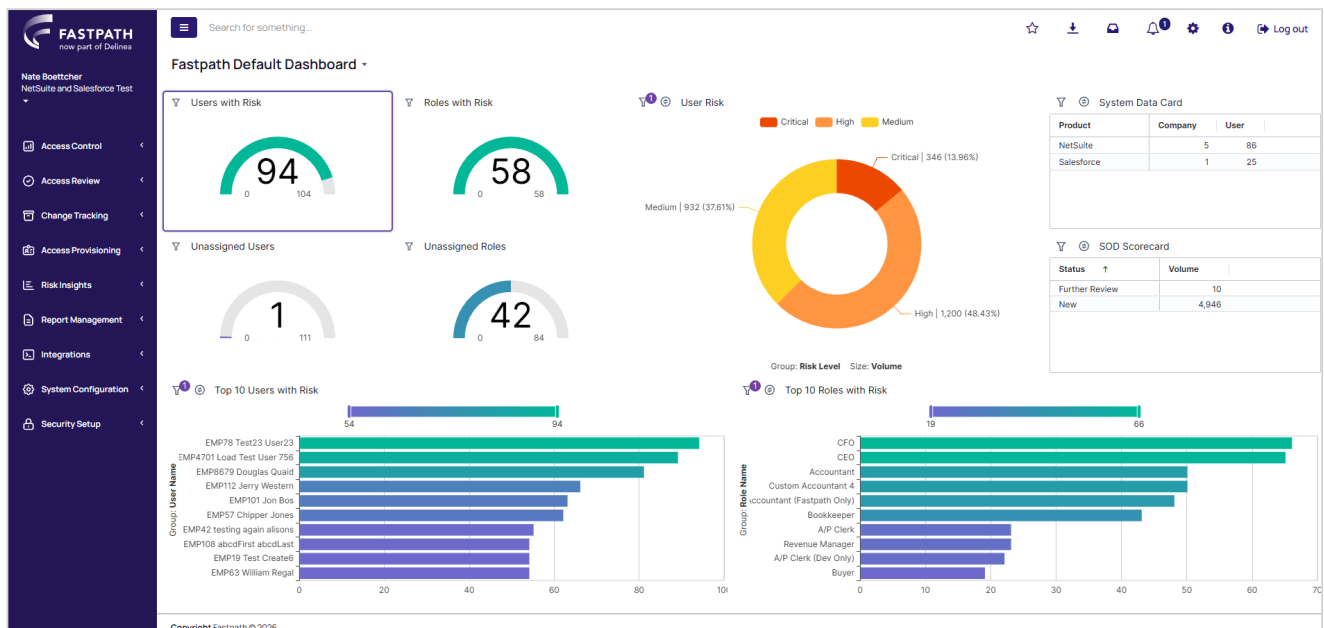
Dynamically adjust visuals without creating new versions

Generate different views from the same governed dataset by tailoring visuals, columns, and attributes directly in the dashboard.



Customize dashboard views for every stakeholder

Build and save role-specific dashboards tailored to the metrics that matter most to each stakeholder.



See how key features of Fastpath Risk Insights add customization flexibility and reduce manual work.

Rich analytics engine

Fastpath data is leveled up into KPIs and charts to bring risk investigation into the dashboard. Drill-down capabilities help you see what's driving risk and where to focus. Cross-link filtering allows you to click on a chart segment and instantly see how it impacts every metric in your dashboard.

Custom visualizations

Answer stakeholder questions in minutes, and present information in the visual format they prefer. Quickly and dynamically change visualizations to highlight the attributes that matter most, and use the Visualizations gallery to build the exact charts you need — pivot tables, pie charts, bar charts, and more.

